

ATEX Compliant

Class I, Div. 1 & 2, Groups A*,B,C,D†
 Class I, Zones 1 & 2, Groups IIB + H₂, IIA
 Class II, Div. 1 & 2, Groups E,F,G
 Class III
 NEMA 3, 4, 7(B,C,D) 9(E,F,G)
 CENELEC - EEx d IIC IP66**



Classified - File E83969
 & File E150827



Certified - File LR11716



File 1W1R4-RE

ATEX Certificate:

DEMCO 01 ATEX 015742U (Enclosure Only)



HK



2HK

FEATURES-SPECIFICATIONS

Applications

Instrumentation housed in HK Series enclosures typically used to measure, detect, monitor, transmit and control industrial processes and systems.

HK Series enclosures are suitable for a broad range of applications, meeting both domestic and international code requirements.

Some specific examples of the type of instruments that can be housed in these enclosures include:

- Flow measurement devices
- Temperature monitors
- Two-wire transmitters
- Gas detectors
- Ph analyzers
- Pressure gauges
- Temperature transmitters
- Oxygen/combustible gas sensors
- Methane gas monitors
- Level detectors
- H₂S monitors
- Transducers
- Pressure switches

See pages E36 and E37 for dimensions.

Features

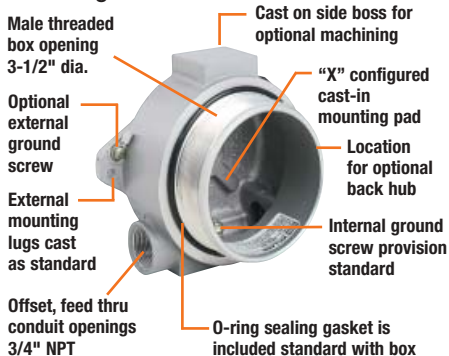
- Enclosures are explosion proof, dust/ignition proof, weather proof and tamper resistant
- HK Series boxes covers are cast from a copper-free aluminum alloy
- Cast stainless steel box, flat & lens cover available (HKSB-BC + HKSB-GLC)
- Neoprene O-rings are provided with HK boxes to assure water resistance in NEMA 4/IP66 conditions
- Two box styles available: HKB single cover design and the 2HKB double cover design. 2HKB enclosure has two separate chambers for isolation between power and instrument.
- HKB box has offset feed-thru conduit openings (3/4" NPT) for maximum use of interior volume
- 2HKB box has offset feed-thru conduit openings (3/4" NPT) on power side and one (3/4" NPT) on bottom instrument side
- Interior mounting pad for instrument/device cast into the bottom of the HKB box is provided in an "X"-configuration for flexibility
- Location of the internal ground screw boss does not interfere with the mounting of the instrument or device

- Five different cover styles are available: standard flat cover, standard glass lens cover, 2" dome cover, 2" glass lens dome cover and 4" dome cover
- All covers have shrouded tamper resistant set screws as standard which can help to combat excessive vibration in rugged settings
- Lugs on cover permit easy removal and tightening

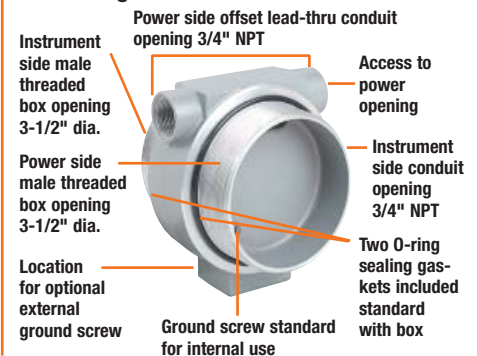
Material/Finish

- Boxes and covers — Copper-free aluminum (less than 4/10 of 1%)
- HKSB series is 316 cast stainless steel
- O-ring sealing gasket — Neoprene rubber
- Ground screws — zinc plated steel with green dye (Stainless steel on HKSB)
- Allen head cover screw — cadmium plated steel (Stainless steel on HKSB)
- Glass lens — 3/8" thick tempered glass
- Finish — silver powder epoxy paint, electrostatically applied
- Special colors available in quantity

HK Design Features



2HK Design Features



* Group A FM only on HK single cover box. Order with -GA suffix.

** CENELEC on assembled HK parts only with suffix "C".

† Seal within 18" of enclosure for Groups BCD and within 6" for Group A in accordance with sections 501-5 and 502-5 of the National Electrical Code.



KILLARK®



NOTE: See page E34 for Third Party Certification

FEATURES-SPECIFICATIONS

Factory Modifications

Approvals allow for factory or field modifications on HKB box for drilling and tapping conduit openings on side or back of enclosure without voiding UL-CSA-FM approvals. Internal mounting pad holes on "X" configured boss can be factory added by drilling from inside of box without piercing the bottom of enclosures. Assemblies with CENELEC approvals must be factory modified in order to comply with certifications.

2HKB Series Boxes

The wall that separates the instrument side from the power side can be machined for slots or holes up to a maximum of two slots 5/16" by 1-1/2". Submit drawings for machining requirements to Killark.

| HK COMPONENT PARTS | |
|--------------------|-----------------------|
| CATALOG NUMBER | DESCRIPTION |
| HKB | Single cover box only |
| 2HKB | Double cover Box only |
| HFC | Flat cover |
| HKGL | Lens cover |
| HK2D | 2" Dome cover |
| HK4D | 4" Dome Cover |
| HK2GLD | 2" Dome lens cover |
| 15722LABB | Rep. "O" Ring Gasket |

| HKB FACTORY MODIFICATIONS | |
|----------------------------------|---|
| OPTIONAL FACTORY MACHINING (HKB) | |
| CATALOG SUFFIX | DESCRIPTION |
| -01 - | 1/2 NPT hub in back |
| -02 - | 3/4 NPT hub in back |
| -20 - | 3/4 NPT hub in side |
| -21 - | 3/4 NPT hub in side 1/2 NPT hub in back |
| -22 - | 3/4 NPT hub in side 3/4 NPT hub in back |
| -02S - | 3/4 NPSM hub in back |
| -22S - | 3/4 NPT hub in side 3/4 NPSM hub in back |
| -2S2S - | 3/4 NPSM hub in side 3/4 NPSM hub in back |
| -2S0 - | 3/4 NPSM hub in side |
| -2S1 - | 3/4 NPSM hub in side 1/2 NPT hub in back |
| -2S2 - | 3/4 NPSM hub in side 3/4 NPT hub in back |
| -GS | External ground screw (Standard on HKB assembly with CENELEC approvals) |
| -GA - | Group A - FM approval (Available only on HKB box furnished with covers installed) |
| -SU93 - | Unpainted - Natural finish |
| -SU9 - | Special colors of powder paint are available in quantity. Consult factory for details |

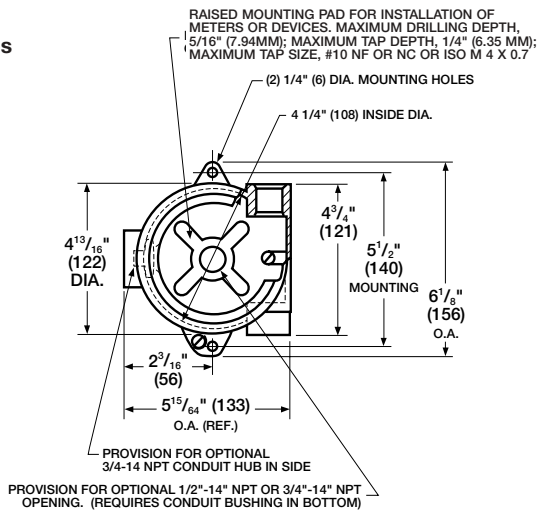
| HK ASSEMBLED PARTS ② ③ | | | | | |
|--------------------------------|-----------------------------|---|-----------------------------|--|--------------------|
| CATALOG NUMBER (CAST ALUMINUM) | | | | CATALOG NUMBER (STAINLESS STEEL) | COVER TYPE |
| HKB BOX & COVERS | | 2HKB BOX WITH BLANK COVER ON POWER SIDE & OPTIONAL COVER ON INSTRUMENT SIDE.④ | | HKS B BOX & COVERS CENELEC UL-CSA-FM APPROVED | |
| UL-CSA-FM APPROVED | CENELEC UL-CSA-FM APPROVED* | (UL-CSA-FM) | CENELEC UL-CSA-FM APPROVED① | | |
| HKB-B | HKB-BC | 2HKB-B-B | 2HKB-BC-BC | HKS B-BC | Standard cover |
| HKB-2D | HKB-2DC | 2HKB-B-2D | 2HKB-BC-2DC | — | 2" Dome cover |
| HKB-4D | HKB-4DC | 2HKB-B-4D | 2HKB-BC-4DC | — | 4" Dome cover |
| HKB-GL | HKB-GLC | 2HKB-B-GL | 2HKB-BC-GLC | HKS B-GLC | Lens cover |
| HKB-2GLD | HKB-2GLDC | 2HKB-B-2GLD | 2HKB-BC-2GLDC | — | 2" Dome lens cover |

- ① Assemblies that are CENELEC approved include as standard:
 - External ground screw with terminal
 - Predrilled nameplate holes and screw on pad for customer installed nameplate.
- ② See information at right for optional factory machining.
- ③ Product is stocked at component level. Recommend ordering as such for reduced lead time.
- ④ 2HKB Assemblies include a flat cover on power side, dome and lens covers can be substituted in place of flat cover, consult factory for ordering details.

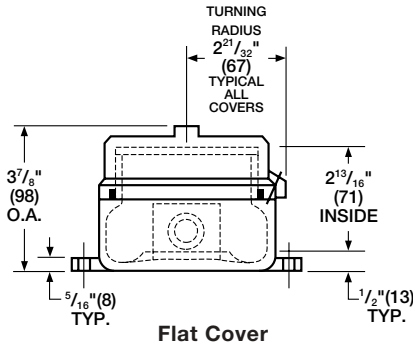
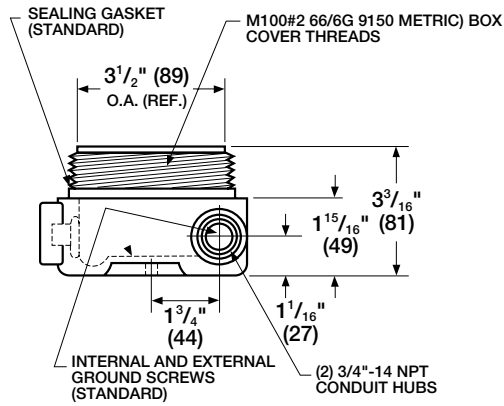
Ordering examples:
 Modified box component HKB-20
 Modified assembly HKB - B - 20 OR HKB - BC - 20

FEATURES-SPECIFICATIONS

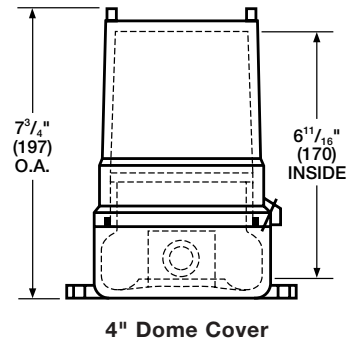
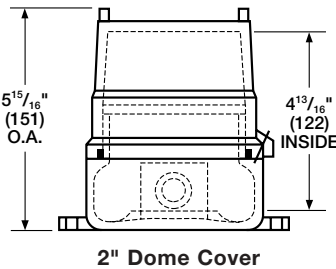
Dimensions



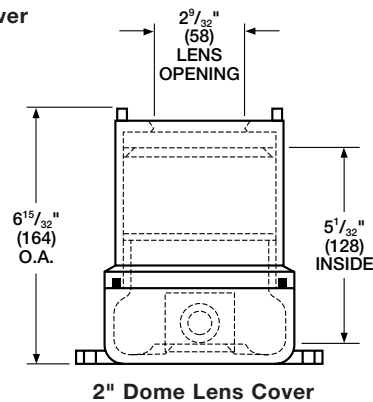
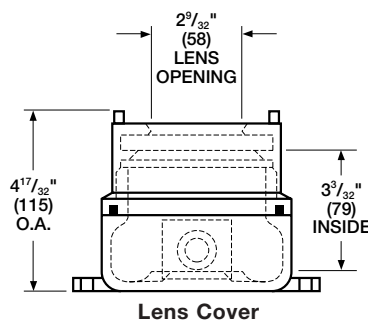
HKB Volume: 31 cu. in.



HKB box and blank cover



HKB box and glass lens cover



FEATURES-SPECIFICATIONS

Dimensions

