



C Type

- Suitable for wet locations when used with gasketed covers.
- Federal Specification W-C-586D/A-A 50563.
- Suitable for use in hazardous location applications when installed according to NEC Articles 501-4(b), Class I, Div. 2, (Suitable for use in Class I Zone 2 applications) 502-4 & 5, and 503-3.

Listed File No. E3397

Certified File No. LR11852

FEATURES-SPECIFICATIONS

DURALOY® 8

Applications

To provide access to conductors for pulling, splicing, and maintenance. Threaded for rigid conduit and IMC.

Features

- Completely interchangeable with competitive bodies, gaskets, and covers
- Flat back design provides greater cubic capacity for easier wire pulling and more room for splicing
- Raintight when used with gasketed covers
- Stainless steel screws on stamped and cast covers
- Smooth integral wire bushings

Material/Finish

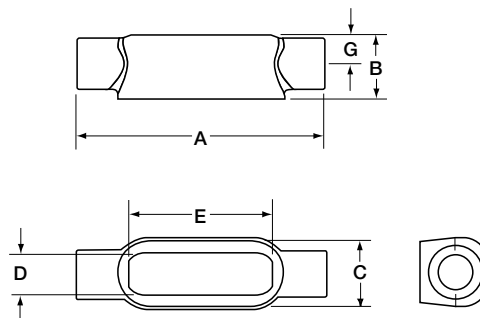
Duraloy Class 30 Gray Iron Alloy

- Tri-coat finish of electrozinc, chromate sealant, and electrostatically applied powder coating.

| C TYPE CONDUIT BODY | | | | | | | | | |
|---------------------|----------|---------------|----------------|---------------|--------------|----------------|---|--------------|----------------|
| CATALOG NUMBER | HUB SIZE | DIMENSIONS | | | | | | | VOLUME CU. IN. |
| | | A | B | C | D | E | F | G | |
| C18 | 1/2" | 5-5/16" (135) | 1-15/32" (37) | 1-15/32" (37) | 1" (25) | 3-9/32" (83) | — | 5/8" (16) | 5.0 |
| C28 | 3/4" | 6-9/16" (167) | 1-11/16" (43) | 1-21/32" (42) | 1-3/16" (30) | 3-15/16" (100) | — | 3/4" (19) | 8.0 |
| C38 | 1" | 7-9/16" (192) | 1-31/32" (50) | 1-27/32" (47) | 1-3/8" (35) | 4-17/32" (115) | — | 7/8" (22) | 12.25 |
| C448 | 1-1/4" | 8-7/16" (214) | 2-3/8" (60) | 2-5/32" (55) | 1-3/4" (44) | 5-15/16" (151) | — | 1-3/32" (28) | 23.25 |
| C58 | 1-1/2" | 10-3/8" (264) | 2-25/32" (71) | 2-25/32" (71) | 2-3/32" (53) | 6-1/2" (165) | — | 1-3/8" (35) | 42.50 |
| C68 | 2" | 12-3/8" (314) | 3-9/16" (90) | 3-27/32" (98) | 3" (76) | 8-5/8" (219) | — | 1-7/8" (48) | 105.00 |
| C78 | 2-1/2" | 15-5/8" (397) | 4-7/16" (113) | 5" (127) | 4-1/4" (108) | 10-7/8" (276) | — | 2-1/2" (64) | 200.00 |
| C88 | 3" | 15-5/8" (397) | 4-13/16" (122) | 5" (127) | 4-1/4" (108) | 10-7/8" (276) | — | 2-1/2" (64) | 217.00 |

F

Dimensions



C Type



LB Type



LL Type

- Suitable for wet locations when used with gasketed covers.
- Federal Specification W-C-586D/A-A 50563.
- Suitable for use in hazardous location applications when installed according to NEC Articles 501-4(b), Class I, Div. 2, (Suitable for use in Class I Zone 2 applications) 502-4 & 5, and 503-3.

Listed File No. E3397

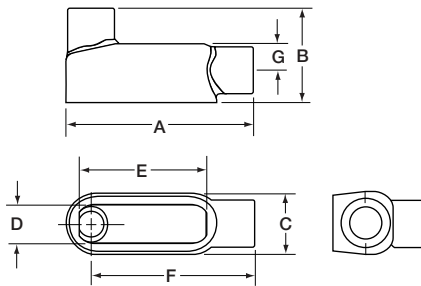
Certified File No. LR11852

FEATURES-SPECIFICATIONS

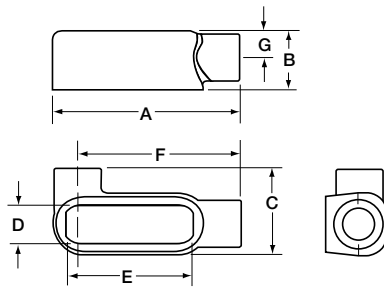
DURALOY® 8

See page F11 for Standard Materials & Finish

Dimensions



LB Type



LL Type

| LB TYPE CONDUIT BODY | | | | | | | | | |
|----------------------|----------|--------------------|-------------------|-------------------|------------------|-------------------|-------------------|----------------|----------------|
| CATALOG NUMBER | HUB SIZE | DIMENSIONS | | | | | | | VOLUME CU. IN. |
| | | A | B | C | D | E | F | G | |
| LB18 | 1/2" | 5-3/32" (129) | 2-9/32" (58) | 1-15/32" (37) | 1" (25) | 3-9/32" (83) | 4-3/8" (111) | 5/8" (16) | 5.0 |
| LB28 | 3/4" | 5-3/4" (146) | 2-1/2" (64) | 1-21/32" (42) | 1-3/16" (30) | 3-15/16" (100) | 4-29/32" (125) | 3/4" (19) | 8.0 |
| LB38 | 1" | 6-5/8" (168) | 2-29/32" (74) | 1-27/32" (47) | 1-3/8" (35) | 4-17/32" (115) | 5-23/32" (145) | 7/8" (22) | 13.0 |
| LB448 | 1-1/4" | 7-1/2" (191) | 3-5/16" (84) | 2-5/32" (55) | 1-3/4" (44) | 5-15/16" (151) | 6-13/32" (163) | 1-3/32" (8) | 24.0 |
| LB58 | 1-1/2" | 9-1/8" (232) | 4-1/32" (102) | 4-25/32" (121) | 2-3/32" (53) | 6-1/2" (165) | 7-3/4" (197) | 1-3/8" (35) | 42.0 |
| LB68 | 2" | 11-1/8" (283) | 4-13/16" (122) | 4-13/16" (122) | 3" (76) | 8-5/8" (219) | 9-3/16" (233) | 1-7/8" (48) | 105.0 |
| LB78 | 2-1/2" | 13-15/16" (354) | 6-1/8" (156) | 6-1/8" (156) | 4-1/4" (108) | 10-7/8" (276) | 11-7/16" (291) | 2-1/2" (64) | 200.0 |
| LB888 | 3" | 13-15/16" (354) | 6-1/2" (165) | 6-1/2" (165) | 4-1/4" (108) | 10-7/8" (276) | 11-7/16" (291) | 2-1/2" (64) | 217.0 |
| LB98 | 3-1/2" | 16-7/8" (429) | 7-9/16" (192) | 7-9/16" (192) | 5-7/16" (138) | 13-7/8" (352) | 13-3/4" (349) | 3-1/8" (79) | 380.0 |
| LB108 | 4" | 16-7/8" (429) | 7-13/16" (198) | 7-13/16" (198) | 5-7/16" (138) | 13-7/8" (352) | 13-3/4" (349) | 3-1/8" (79) | 400.0 |

| LL TYPE CONDUIT BODY | | | | | | | | | |
|----------------------|----------|--------------------|-------------------|-------------------|-----------------|-------------------|-------------------|----------------|----------------|
| CATALOG NUMBER | HUB SIZE | DIMENSIONS | | | | | | | VOLUME CU. IN. |
| | | A | B | C | D | E | F | G | |
| LL18 | 1/2" | 5-3/32" (129) | 2-9/32" (56) | 1-15/32" (37) | 1" (25) | 3-9/32" (83) | 4-3/8" (111) | 5/8" (16) | 5.0 |
| LL28 | 3/4" | 5-3/4" (146) | 2-1/2" (64) | 1-21/32" (42) | 1-3/16" (30) | 3-15/16" (100) | 4-29/32" (125) | 3/4" (19) | 8.0 |
| LL38 | 1" | 6-5/8" (168) | 2-29/32" (74) | 1-27/32" (47) | 1-3/8" (35) | 4-17/32" (115) | 5-23/32" (145) | 7/8" (22) | 13.0 |
| LL448 | 1-1/4" | 7-1/2" (191) | 3-5/16" (84) | 2-5/32" (55) | 1-3/4" (44) | 5-15/16" (151) | 6-13/32" (163) | 1-3/32" (8) | 24.0 |
| LL58 | 1-1/2" | 9-1/8" (232) | 4-1/32" (102) | 4-25/32" (121) | 2-3/32" (53) | 6-1/2" (165) | 7-3/4" (197) | 1-3/8" (35) | 42.0 |
| LL68 | 2" | 11-1/8" (283) | 4-13/16" (122) | 4-13/16" (122) | 3" (76) | 8-5/8" (219) | 9-3/16" (233) | 1-7/8" (48) | 105.0 |
| LL78 | 2-1/2" | 13-15/16" (354) | 6-1/8" (156) | 6-1/8" (156) | 4-1/4" (108) | 10-7/8" (276) | 11-7/16" (291) | 2-1/2" (64) | 200.0 |
| LL888 | 3" | 13-15/16" (354) | 6-1/2" (165) | 6-1/2" (165) | 4-1/4" (108) | 10-7/8" (276) | 11-7/16" (291) | 2-1/2" (64) | 217.0 |



LR Type



T Type

- Suitable for wet locations when used with gasketed covers.
- Federal Specification W-C-586D/A-A 50563.
- Suitable for use in hazardous location applications when installed according to NEC Articles 501-4(b), Class I, Div. 2, (Suitable for use in Class I Zone 2 applications) 502-4 & 5, and 503-3.

Listed File No. E3397

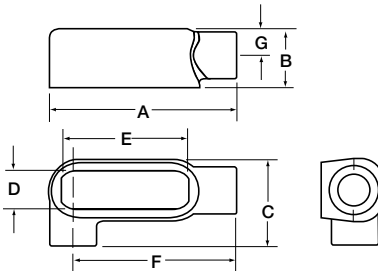
Certified File No. LR11852

FEATURES-SPECIFICATIONS

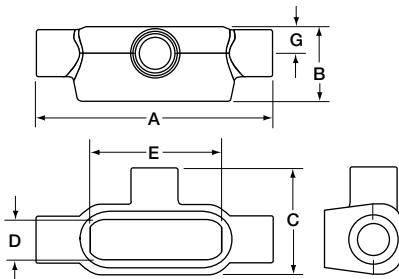


See page F11 for Standard Materials & Finish

Dimensions



LR Type



T Type

| LR TYPE CONDUIT BODY | | | | | | | | | |
|----------------------|----------|--------------------|-------------------|-------------------|-----------------|-------------------|-------------------|-----------------|----------------|
| CATALOG NUMBER | HUB SIZE | DIMENSIONS | | | | | | | VOLUME CU. IN. |
| | | A | B | C | D | E | F | G | |
| LR18 | 1/2" | 5-3/32" (129) | 1-15/16" (49) | 2-9/32" (58) | 1" (52) | 3-9/32" (83) | 4-3/8" (111) | 5/8" (16) | 5.0 |
| LR28 | 3/4" | 5-3/4" (146) | 1-11/16" (43) | 2-1/2" (64) | 1-3/16" (30) | 3-15/16" (84) | 4-29/32" (125) | 3/4" (19) | 8.0 |
| LR38 | 1" | 6-5/8" (168) | 1-31/32" (50) | 2-29/32" (74) | 1-3/8" (35) | 4-17/32" (115) | 5-23/32" (145) | 7/8" (22) | 13.0 |
| LR448 | 1-1/4" | 7-1/2" (191) | 2-3/8" (60) | 3-5/16" (84) | 1-3/4" (44) | 5-15/16" (151) | 6-13/32" (163) | 1-3/32" (28) | 24.0 |
| LR58 | 1-1/2" | 9-1/8" (232) | 2-25/32" (71) | 4-1/32" (102) | 2-3/32" (53) | 6-1/2" (165) | 7-3/4" (199) | 1-3/8" (35) | 42.0 |
| LR68 | 2" | 11-1/8" (283) | 3-9/16" (90) | 4-13/16" (122) | 3" (76) | 8-5/8" (219) | 9-3/16" (233) | 1-7/8" (48) | 105.0 |
| LR78 | 2-1/2" | 13-15/16" (354) | 4-7/16" (113) | 6-1/8" (156) | 4-1/4" (108) | 10-7/8" (276) | 11-7/16" (291) | 2-1/2" (64) | 200.0 |
| LR888 | 3" | 13-15/16" (354) | 4-13/16" (122) | 6-1/2" (165) | 4-1/4" (108) | 10-7/8" (276) | 11-7/16" (291) | 2-1/2" (64) | 217.0 |

| T TYPE CONDUIT BODY | | | | | | | | | |
|---------------------|----------|-------------------|-------------------|-------------------|-----------------|--------------------|---|-----------------|----------------|
| CATALOG NUMBER | HUB SIZE | DIMENSIONS | | | | | | | VOLUME CU. IN. |
| | | A | B | C | D | E | F | G | |
| T18 | 1/2" | 5-15/16" (151) | 1-25/32" (45) | 2-5/16" (59) | 1" (25) | 3-9/32" (83) | — | 5/8" (16) | 6.0 |
| T28 | 3/4" | 6-9/16" (167) | 2" (51) | 2-1/2" (64) | 1-3/16" (30) | 3-15/16" (100) | — | 3/4" (19) | 10.0 |
| T38 | 1" | 7-9/16" (192) | 2-9/32" (58) | 2-25/32" (71) | 1-3/8" (35) | 4-17/32" (115) | — | 7/8" (22) | 15.0 |
| T448 | 1-1/4" | 8-7/16" (214) | 2-5/8" (67) | 3-1/8" (79) | 1-3/4" (44) | 5-5/16" (135) | — | 1-3/32" (28) | 25.0 |
| T58 | 1-1/2" | 10-3/8" (264) | 2-25/32" (71) | 4-1/32" (102) | 2-3/32" (53) | 6-1/2" (165) | — | 1-3/8" (35) | 44.0 |
| T68 | 2" | 12-3/8" (314) | 3-9/16" (90) | 5-1/8" (130) | 3" (76) | 8-5/8" (219) | — | 1-7/8" (48) | 105.0 |
| T78 | 2-1/2" | 15-5/8" (397) | 4-7/16" (113) | 6-11/16" (170) | 4-1/4" (108) | 10-11/16" (271) | — | 2-1/2" (64) | 200.0 |
| T88 | 3" | 15-5/8" (397) | 4-13/16" (122) | 6-11/16" (170) | 4-1/4" (108) | 10-11/16" (271) | — | 2-1/2" (64) | 217.0 |



TB Type



X Type

- Suitable for wet locations when used with gasketed covers.
- Federal Specification W-C-586D/A-A 50563.
- Suitable for use in hazardous location applications when installed according to NEC Articles 501-4(b), Class I, Div. 2, (Suitable for use in Class I Zone 2 applications) 502-4 & 5, and 503-3.

Listed File No. E3397

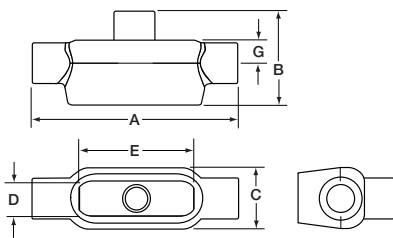
Certified File No. LR11852

FEATURES-SPECIFICATIONS

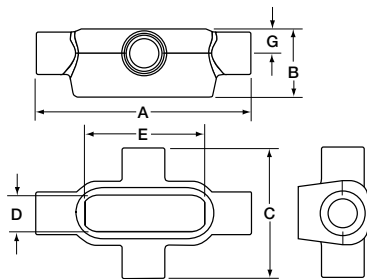


See page F11 for Standard Materials & Finish

Dimensions



TB Type



X Type

| TB TYPE CONDUIT BODY | | | | | | | | | |
|----------------------|----------|-------------------|------------------|------------------|-----------------|-------------------|---|-----------------|----------------|
| CATALOG NUMBER | HUB SIZE | DIMENSIONS | | | | | | | VOLUME CU. IN. |
| | | A | B | C | D | E | F | G | |
| TB18 | 1/2" | 5-15/16" (151) | 2-15/16" (75) | 1-15/16" (49) | 1" (25) | 3-9/32" (83) | — | 5/8" (16) | 6.0 |
| TB28 | 3/4" | 6-9/16" (167) | 2-1/2" (64) | 1-21/32" (42) | 1-3/16" (30) | 3-15/16" (100) | — | 3/4" (19) | 10.0 |
| TB38 | 1" | 7-9/16" (192) | 2-25/32" (71) | 1-27/32" (47) | 1-3/8" (35) | 4-17/32" (115) | — | 7/8" (22) | 15.0 |
| TB448 | 1-1/4" | 8-7/16" (214) | 3-1/8" (79) | 2-3/16" (55) | 1-3/4" (44) | 5-5/16" (135) | — | 1-3/32" (26) | 25.0 |
| TB58 | 1-1/2" | 10-3/8" (264) | 4-1/32" (102) | 2-25/32" (71) | 2-3/32" (53) | 6-1/2" (165) | — | 1-3/8" (35) | 44.0 |
| TB68 | 2" | 12-3/8" (314) | 5-1/8" (130) | 3-7/8" (98) | 3" (76) | 8-5/8" (219) | — | 1-7/8" (48) | 105.0 |

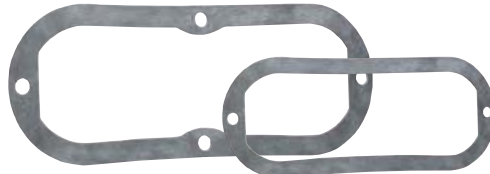
| X TYPE CONDUIT BODY | | | | | | | | | |
|---------------------|----------|-------------------|------------------|-------------------|-----------------|-------------------|---|-----------------|----------------|
| CATALOG NUMBER | HUB SIZE | DIMENSIONS | | | | | | | VOLUME CU. IN. |
| | | A | B | C | D | E | F | G | |
| X18 | 1/2" | 5-15/16" (151) | 1-25/32" (45) | 3-1/8" (79) | 1" (25) | 3-9/32" (83) | — | 5/8" (16) | 6.0 |
| X28 | 3/4" | 6-9/16" (167) | 2" (51) | 3-15/16" (100) | 1-3/16" (30) | 3-15/16" (100) | — | 3/4" (19) | 10.0 |
| X38 | 1" | 7-9/16" (192) | 2-9/32" (58) | 3-23/32" (94) | 1-3/8" (35) | 4-17/32" (115) | — | 7/8" (22) | 15.0 |
| X448 | 1-1/4" | 8-7/16" (214) | 2-5/8" (67) | 4-1/16" (103) | 1-3/4" (44) | 5-5/16" (135) | — | 1-3/32" (26) | 25.0 |
| X58 | 1-1/2" | 10-3/8" (264) | 2-25/32" (71) | 5-9/32" (134) | 2-3/32" (53) | 6-1/2" (165) | — | 1-3/8" (35) | 44.0 |
| X68 | 2" | 12-3/8" (314) | 3-9/16" (90) | 6-3/8" (162) | 3" (76) | 8-5/8" (219) | — | 1-7/8" (48) | 105.0 |



Cast Covers



Stamped Steel Covers



Cover Gaskets (Neoprene)

- Suitable for wet locations when used with gasketed covers.
- Federal Specification W-C-586D/A-A 50563.
- Suitable for use in hazardous location applications when installed according to NEC Articles 501-4(b), Class I, Div. 2, (Suitable for use in Class I Zone 2 applications) 502-4 & 5, and 503-3.

 Listed File No. E3397

 Certified File No. LR11852

FEATURES-SPECIFICATIONS

DURALOY® 8

See page F11 for Standard Materials & Finish

Cast Material/Finish

Duraloy Class 30 Gray Iron Alloy

- Tri-coat finish of electrozinc, chromate sealant, and electrostatically applied powder coating
- 300 Series stainless steel screws

Galvanized Steel

- Natural finish
- 300 Series stainless steel screws

Material/Finish

- Neoprene. Compression molded.

| CAST IRON COVERS | | | | |
|------------------|----------|--------------------|--------------|----------|
| CATALOG NUMBER | HUB SIZE | OVERALL DIMENSIONS | | |
| | | LENGTH | WIDTH | HEIGHT |
| 180F | 1/2" | 4-7/32"(107) | 1-15/32"(37) | 3/8"(10) |
| 280F | 3/4" | 4-13/16"(122) | 1-21/32"(42) | 3/8"(10) |
| 380F | 1" | 5-19/32"(142) | 1-27/32"(47) | 5/8"(16) |
| 480F | 1-1/4" | 6-9/16"(167) | 2-3/16"(56) | 5/8"(16) |
| 580F | 1-1/2" | 7-7/8"(200) | 2-25/32"(71) | 5/8"(16) |
| 680F | 2" | 9-3/4"(248) | 3-7/8"(98) | 5/8"(16) |
| 880F | 2-1/2" | 12-1/4"(311) | 5"(127) | 5/8"(16) |
| 880F | 3" | 12-1/4"(311) | 5"(127) | 5/8"(16) |
| 980F | 3-1/2" | 15"(381) | 6-1/4"(159) | 5/8"(16) |
| 980F | 4" | 15"(381) | 6-1/4"(159) | 5/8"(16) |

| STAMPED STEEL COVERS | | | | |
|----------------------|----------|--------------------|--------------|-----------|
| CATALOG NUMBER | HUB SIZE | OVERALL DIMENSIONS | | |
| | | LENGTH | WIDTH | HEIGHT |
| 180S | 1/2" | 4-7/32"(107) | 1-15/32"(37) | 5/16"(8) |
| 280S | 3/4" | 4-13/16"(122) | 1-21/32"(42) | 5/16"(8) |
| 380S | 1" | 5-19/32"(142) | 1-27/32"(47) | 5/16"(8) |
| 480S | 1-1/4" | 6-9/16"(167) | 2-3/16"(56) | 5/16"(8) |
| 580S | 1-1/2" | 7-7/8"(200) | 2-25/32"(71) | 5/16"(8) |
| 680S | 2" | 9-3/4"(248) | 3-7/8"(98) | 5/16"(8) |
| 880S | 2-1/2" | 12-1/4"(311) | 5"(127) | 9/16"(14) |
| 880S | 3" | 12-1/4"(311) | 5"(127) | 9/16"(14) |
| 980S | 3-1/2" | 15"(381) | 6-1/4"(159) | 9/16"(14) |
| 980S | 4" | 15"(381) | 6-1/4"(159) | 9/16"(14) |

| COVER GASKETS | | | | |
|----------------|----------|--------------------|--------------|---------|
| CATALOG NUMBER | HUB SIZE | OVERALL DIMENSIONS | | |
| | | LENGTH | WIDTH | HEIGHT |
| GASK851N | 1/2" | 4-7/32"(107) | 1-15/32"(37) | 1/8"(3) |
| GASK852N | 3/4" | 4-13/16"(122) | 1-21/32"(42) | 1/8"(3) |
| GASK853N | 1" | 5-19/32"(142) | 1-27/32"(47) | 1/8"(3) |
| GASK854N | 1-1/4" | 6-9/16"(167) | 2-3/16"(56) | 1/8"(3) |
| GASK805N | 1-1/2" | 7-7/8"(200) | 2-25/32"(71) | 1/8"(3) |
| GASK806N | 2" | 9-3/4"(248) | 3-7/8"(98) | 1/8"(3) |
| GASK808N | 2-1/2" | 12-1/4"(311) | 5"(127) | 1/8"(3) |
| GASK808N | 3" | 12-1/4"(311) | 5"(127) | 1/8"(3) |
| GASK809N | 3-1/2" | 15"(381) | 6-1/4"(159) | 1/8"(3) |
| GASK809N | 4" | 15"(381) | 6-1/4"(159) | 1/8"(3) |

